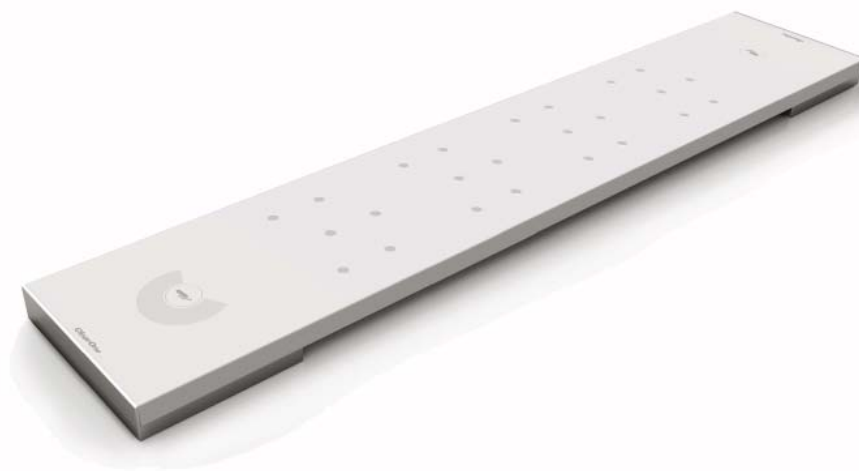


The Beamforming Microphone Array is the Pro-Audio industry's first professional-grade microphone array with beamforming and adaptive steering technology and ClearOne's next-generation Acoustic Echo Cancellation. The ultra-sleek design fits into any conferencing environment and delivers the clearest audio pickup available with adaptive acoustic processing.



Applications



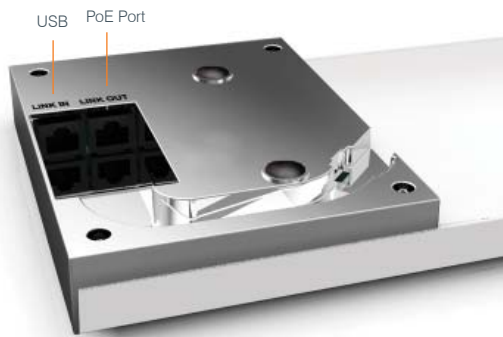
- Board Room
- Conference Room
- Training Center
- Courtroom
- House of Worship
- Telepresence

Features



- + Beamforming & adaptive steering technology
- + Next-generation Acoustic Echo Cancellation
- + 24 microphone elements form 6 beams, with 360-degree coverage
- + Mono and stereo modes for diverse applications
- + Flexible mounting for ceiling, tabletop or wall mounting to fit any room requirements
- + Works with CONVERGE® Pro products: 880, 840T, 880T, 880TA
- + Expandable for larger room applications by daisy-chaining up to three arrays per CONVERGE® Pro unit
- + Adaptive acoustic processing automatically adjusts to mounting and room configuration for best possible audio pickup
- + Replaces up to 10 traditional microphones, with twice the pick-up range

BEAMFORMING MICROPHONE ARRAY CONNECTIONS



Functional Specifications

AUDIO

Acoustic Characteristics:

- 6 beam pattern
- Auto sensing ceiling, wall or table mounting
- Auto voice tracking

Auto Mixer Parameters:

- Number of Open Microphones (NOM)
- First mic priority mode
- Last mic mode
- Maximum number of mics mode
- Ambient level
- Gate threshold adjust
- Off attenuation adjust
- Hold time
- Decay rate

Matrix Mixing Parameters:

- 1 Master beam in
- 18 Expansion Bus In/Out
- 2 USB IN/Out (future)

Beamforming Mic Array Configuration:

- Echo cancellation on/off
- Noise cancellation on/off
- Filters:
 - All Pass
 - Low Pass
 - High Pass
 - Notch
 - pEQ
- ALC on/off
- Gain adjust
- Mute on/off
- Auto gate/manual gate

POWER

- PoE IEEE 802.3AF-2003
- CAT-5 cable or higher
- 6 watts average power consumption

Expansion Bus In/Out:

- Proprietary Network
- RJ-45 (2)
- Category 5 twisted-pair cable for 200 feet maximum cable length between any two CONVERGE Pro devices

USB (future):

- Version 2.0 Compatible
- Type: B-connector
- Audio Class

Configuration & Administration Software:

- CONVERGE Console

WEIGHT

- 4.4 lbs (2.0kg)

MECHANICAL:

- 30.0" x 1.00" x 5.75" (WxHxD) (762mm x 25.4mm x 146mm)

MOUNTING:

- Tabletop
- Optional Ceiling mount kit
- Optional Wall mount kit

ENVIRONMENTAL:

- Operating Temperature
- 14° F/-10° C to 122° F/50° C ambient temperature

PART NUMBERS:

- 910-001-003 : Beamforming Microphone Array
- 910-001-004 : PoE Power Supply & Cables Kit for BFM Array
- 910-001-005 : Ceiling Mount kit for BFM Array
- 910-001-006 : Wall Mount kit for BFM Array
- 930-001-003 : Bundle with Beamforming Microphone Array, PoE Power Supply & Cables Kit

ClearOne Contacts

North America
 Tel: 801-975-7200
 Toll Free: 800-945-7730
 TechSales: 1-800-707-6994
 Fax: 801-977-0087
 sales@clearone.com

Europe & Oceania
 Tel: +44 (0) 1189 036 053
 global@clearone.com

Asia Pacific
 Tel: +852 3590 4526
 global@clearone.com

Latin America
 Tel: 801-974-3621
 global@clearone.com

Middle East
 Tel: +852 3590 4526
 global@clearone.com